

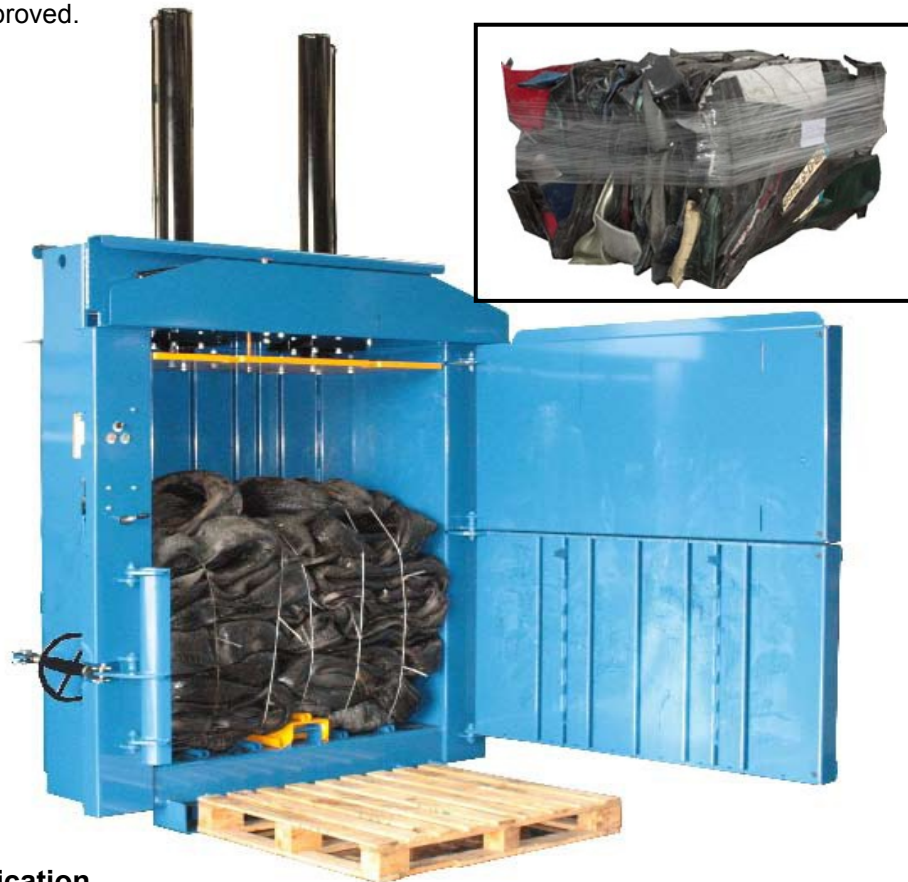
CWSL BALER 500HD

producing tyre weight bales up to 650kg

General Description

The Baler 500HD heavy duty baler has extra long rams to produce far denser bales than any standard baler. The entire frame-work of this model is reinforced and it has been fitted with our unique bale retaining system, allowing it to handle harder to bale materials such as car tyres and car bumpers.

12 months parts and labour warranty.
CE marked and approved.



Technical Specification

Height:	3.5m	Noise:	74 d(B)A
Width:	2.10m	Transport Height:	2.55m
Depth:	1.2m	Bale Dimensions	
Weight:	1930kg	Height of Bale	1.2m
Power Supply:	400 volt 11kw	Width of Bale	1.5m
	32 amp 3 phase	Depth of Bale	0.769m
Cycle time:	40 seconds	Weight of Bale	up to 650kg
			(dependent on waste stream)

01457 839831 Fax: 01457 838960 Email: info@clearwastesolutions.co.uk